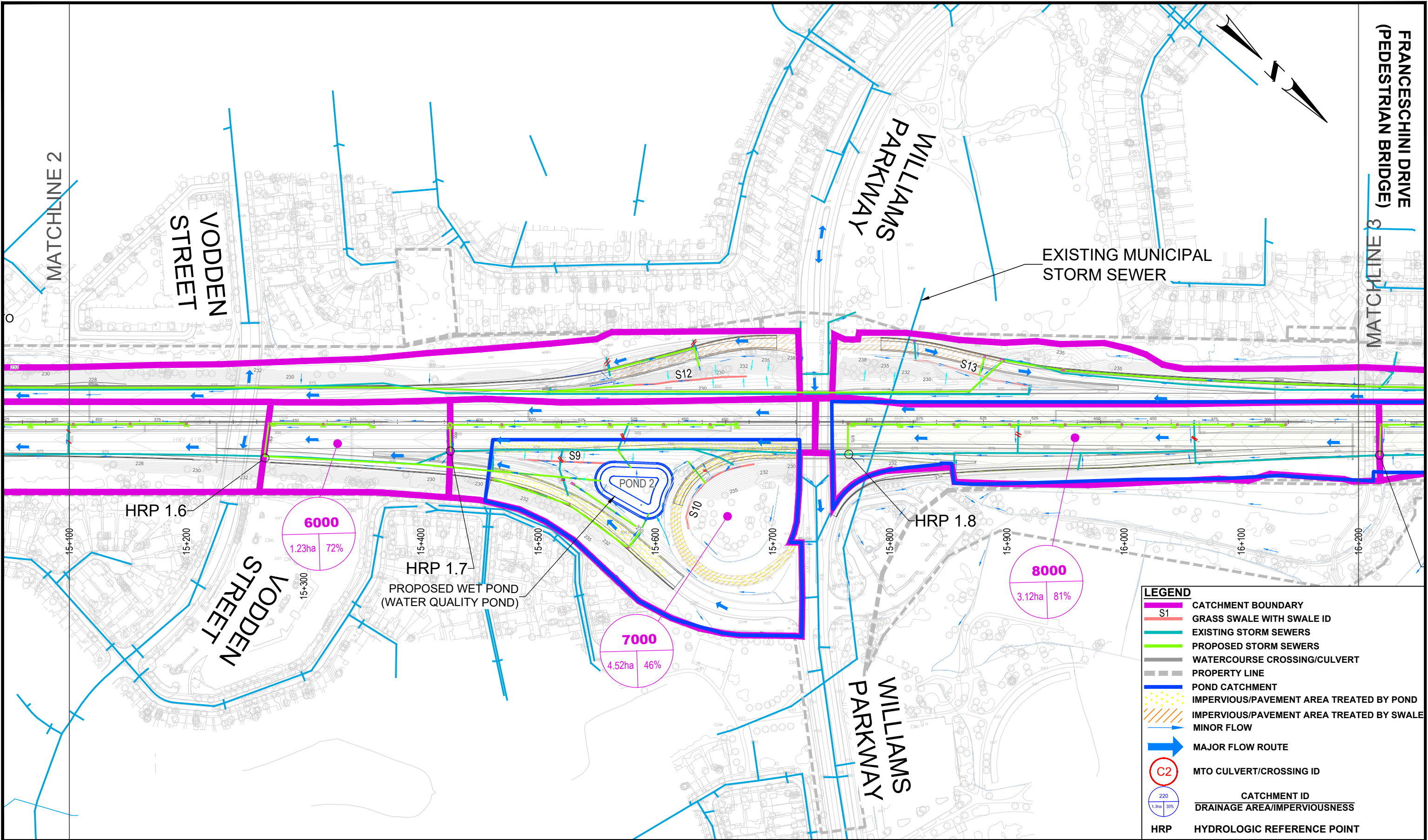


Appendix **H**

Proposed Roadway Drainage and Stormwater Management Plan

FILENAME: C:\Users\Zanigzard\OneDrive - AECOM\04-CAD\SHEETS\FIG-5-RD-DRN-P.dwg
 PLOTDATE: Feb 17, 2025 - 2:37pm



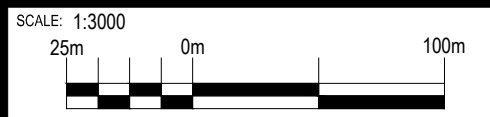
FRANCESCHINI DRIVE
 (PEDESTRIAN BRIDGE)
 ENLIGHTEN

LEGEND	
	CATCHMENT BOUNDARY
	S1 GRASS SWALE WITH SWALE ID
	EXISTING STORM SEWERS
	PROPOSED STORM SEWERS
	WATERCOURSE CROSSING/CULVERT
	PROPERTY LINE
	POND CATCHMENT
	IMPERVIOUS/PAVEMENT AREA TREATED BY POND
	IMPERVIOUS/PAVEMENT AREA TREATED BY SWALE
	MINOR FLOW
	MAJOR FLOW ROUTE
	MTO CULVERT/CROSSING ID
	CATCHMENT ID
	DRAINAGE AREA/IMPERVIOUSNESS
	HYDROLOGIC REFERENCE POINT



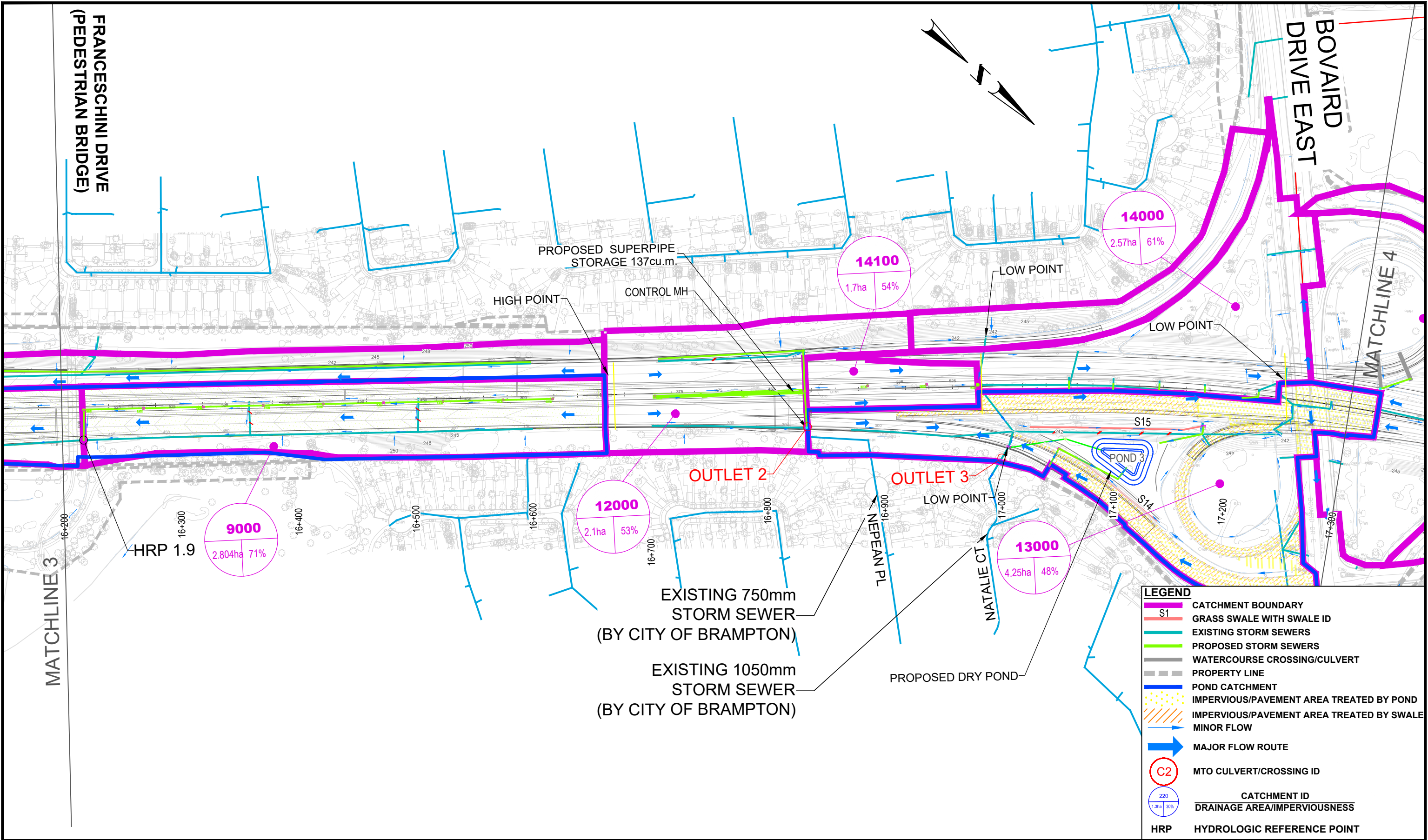
HIGHWAY 410 IMPROVEMENTS FROM SOUTH OF
 QUEEN STREET TO NORTH OF BOVAIRD DRIVE
 PRELIMINARY DESIGN & CLASS EA STUDY

PROPOSED CONDITIONS
 ROADWAY DRAINAGE & STORMWATER
 MANAGEMENT CONCEPT PLAN



DATE: FEBRUARY 2025

FILENAME: C:\Users\Zaniszad\OneDrive - AECOM\04-CAD\SHEETS\FIG-5-RD-DRN-P.dwg
 PLOTDATE: Feb 17, 2025 - 2:35pm



LEGEND	
	CATCHMENT BOUNDARY
	S1 GRASS SWALE WITH SWALE ID
	EXISTING STORM SEWERS
	PROPOSED STORM SEWERS
	WATERCOURSE CROSSING/CULVERT
	PROPERTY LINE
	POND CATCHMENT
	IMPERVIOUS/PAVEMENT AREA TREATED BY POND
	IMPERVIOUS/PAVEMENT AREA TREATED BY SWALE
	MINOR FLOW
	MAJOR FLOW ROUTE
	MTO CULVERT/CROSSING ID
	CATCHMENT ID
	DRAINAGE AREA/IMPERVIOUSNESS
	HYDROLOGIC REFERENCE POINT

AECOM

Ontario **Ministry of Transportation**

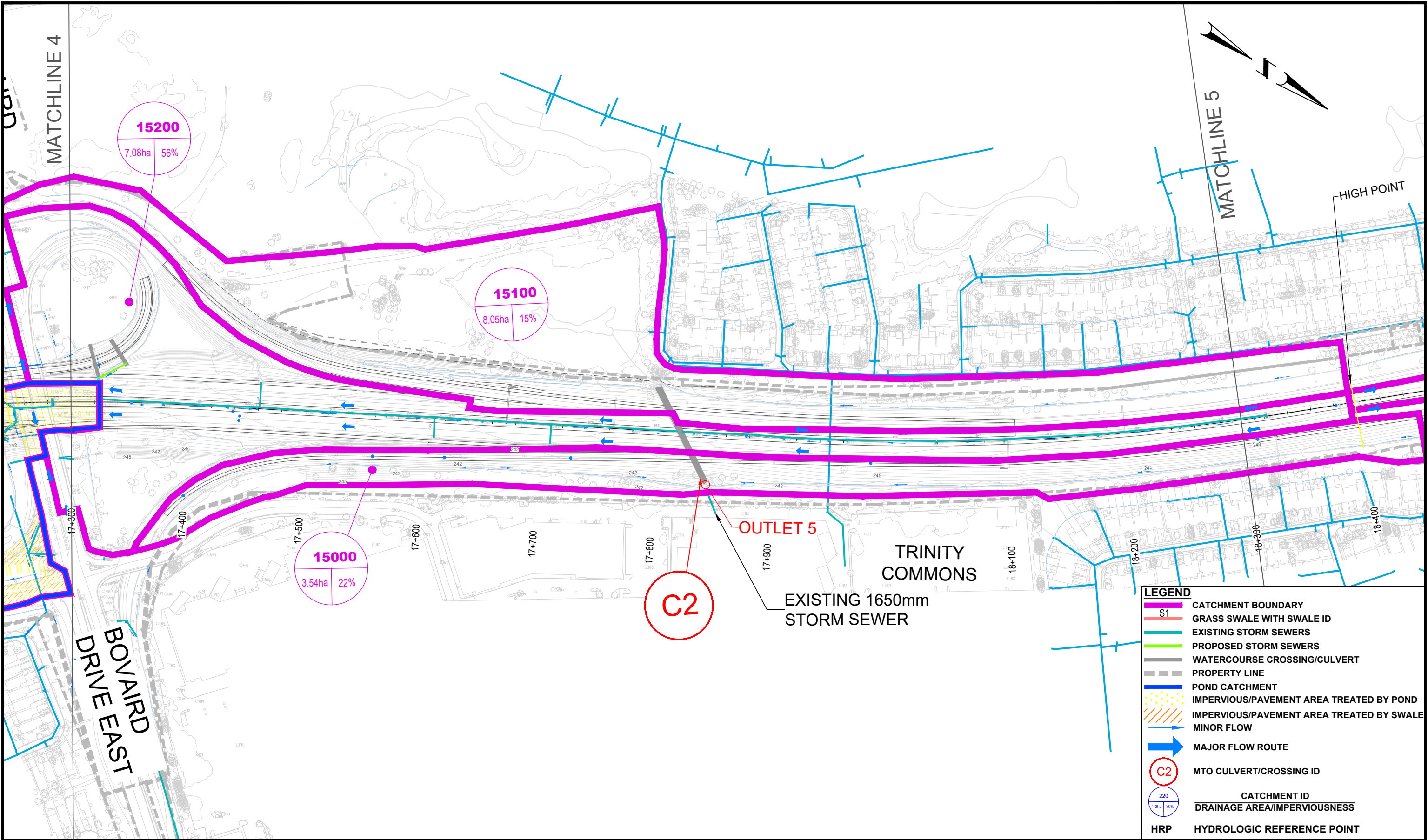
HIGHWAY 410 IMPROVEMENTS FROM SOUTH OF QUEEN STREET TO NORTH OF BOVAIRD DRIVE
 PRELIMINARY DESIGN & CLASS EA STUDY

PROPOSED CONDITIONS
 ROADWAY DRAINAGE & STORMWATER
 MANAGEMENT CONCEPT PLAN

SCALE: 1:3000

DATE: FEBRUARY 2025

FILENAME: C:\Users\Zaniszad\OneDrive - AECOM\04-CAD\SHEETS\FIG-5-RD-DRN-P.dwg
 PLOTDATE: Feb 17, 2025 - 2:39pm



LEGEND	
	CATCHMENT BOUNDARY
	S1 GRASS SWALE WITH SWALE ID
	EXISTING STORM SEWERS
	PROPOSED STORM SEWERS
	WATERCOURSE CROSSING/CULVERT
	PROPERTY LINE
	POND CATCHMENT
	IMPERVIOUS/PAVEMENT AREA TREATED BY POND
	IMPERVIOUS/PAVEMENT AREA TREATED BY SWALE
	MINOR FLOW
	MAJOR FLOW ROUTE
	MTO CULVERT/CROSSING ID
	CATCHMENT ID DRAINAGE AREA/IMPERVIOUSNESS
	HYDROLOGIC REFERENCE POINT

AECOM

Ontario **Ministry of Transportation**

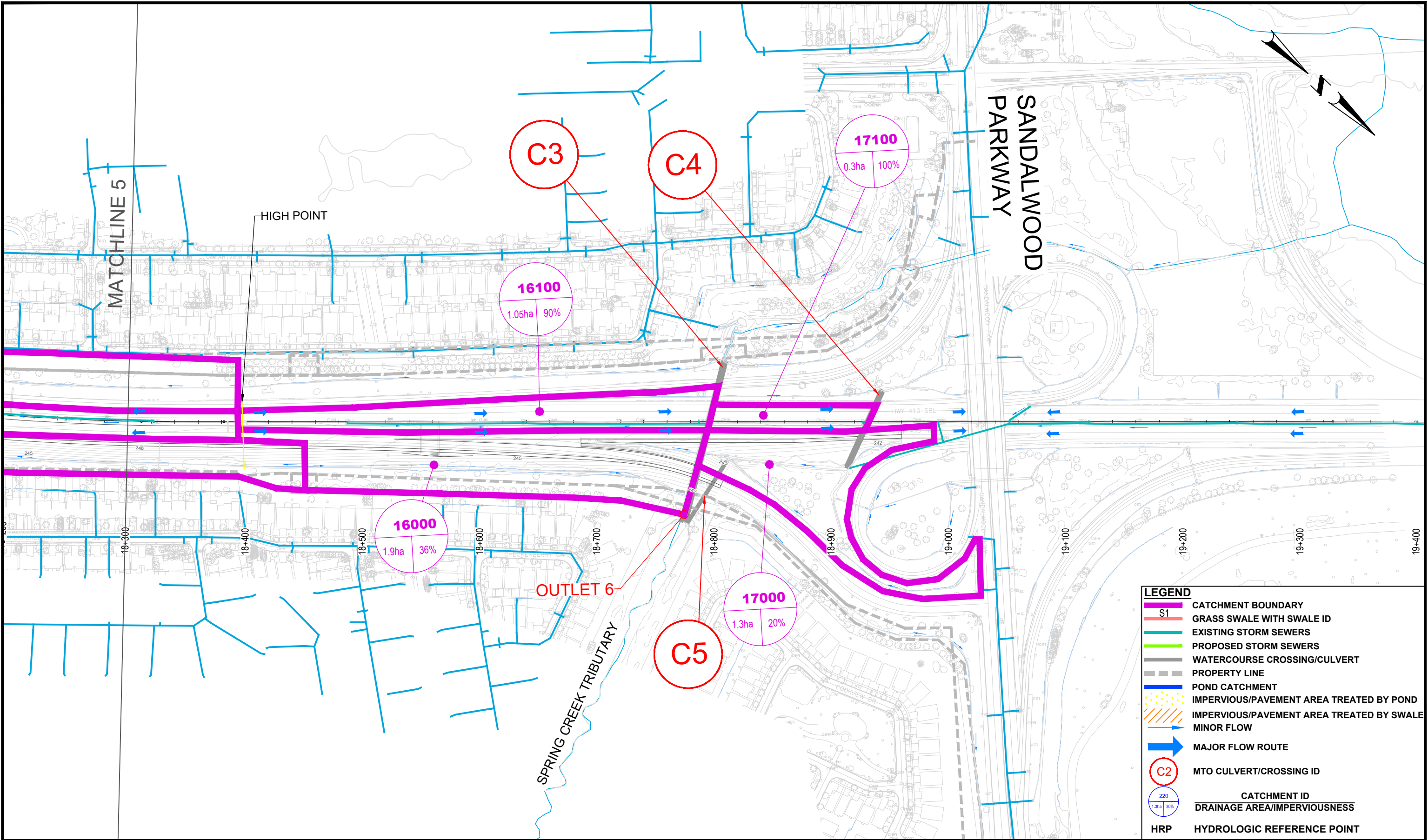
HIGHWAY 410 IMPROVEMENTS FROM SOUTH OF QUEEN STREET TO NORTH OF BOVAIRD DRIVE
 PRELIMINARY DESIGN & CLASS EA STUDY

PROPOSED CONDITIONS
 ROADWAY DRAINAGE & STORMWATER
 MANAGEMENT CONCEPT PLAN

SCALE: 1:3000

DATE: FEBRUARY 2025

FILENAME: C:\Users\Zaniszad\OneDrive - AECOM\04-CAD\SHEETS\FIG-5-RD-DRN-P.dwg
 PLOTDATE: Feb 17, 2025 - 2:40pm

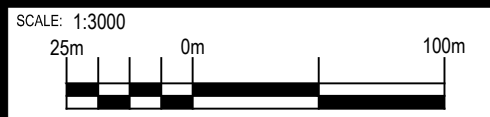


LEGEND	
	CATCHMENT BOUNDARY
	S1 GRASS SWALE WITH SWALE ID
	EXISTING STORM SEWERS
	PROPOSED STORM SEWERS
	WATERCOURSE CROSSING/CULVERT
	PROPERTY LINE
	POND CATCHMENT
	IMPERVIOUS/PAVEMENT AREA TREATED BY POND
	IMPERVIOUS/PAVEMENT AREA TREATED BY SWALE
	MINOR FLOW
	MAJOR FLOW ROUTE
	MTO CULVERT/CROSSING ID
	CATCHMENT ID
	DRAINAGE AREA/IMPERVIOUSNESS
	HRP HYDROLOGIC REFERENCE POINT

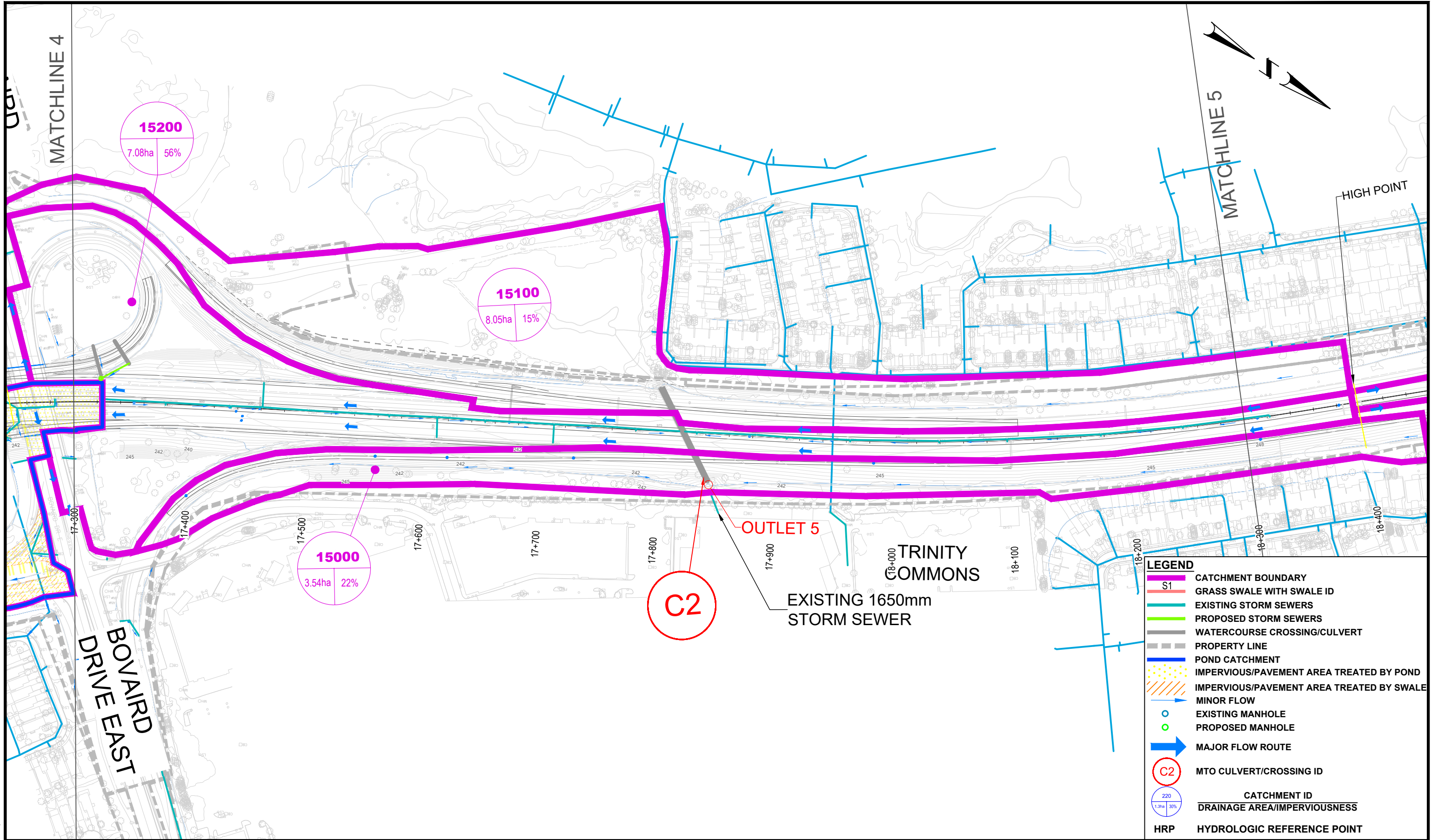


HIGHWAY 410 IMPROVEMENTS FROM SOUTH OF QUEEN STREET TO NORTH OF BOVAIRD DRIVE
 PRELIMINARY DESIGN & CLASS EA STUDY

PROPOSED CONDITIONS
 ROADWAY DRAINAGE & STORMWATER
 MANAGEMENT CONCEPT PLAN



DATE: FEBRUARY 2025



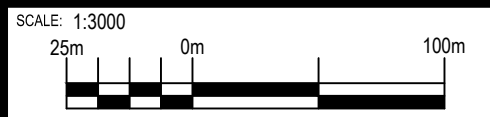
LEGEND	
	CATCHMENT BOUNDARY
	S1 GRASS SWALE WITH SWALE ID
	EXISTING STORM SEWERS
	PROPOSED STORM SEWERS
	WATERCOURSE CROSSING/CULVERT
	PROPERTY LINE
	POND CATCHMENT
	IMPERVIOUS/PAVEMENT AREA TREATED BY POND
	IMPERVIOUS/PAVEMENT AREA TREATED BY SWALE
	MINOR FLOW
	EXISTING MANHOLE
	PROPOSED MANHOLE
	MAJOR FLOW ROUTE
	MTO CULVERT/CROSSING ID
	CATCHMENT ID
	DRAINAGE AREA/IMPERVIOUSNESS
	HYDROLOGIC REFERENCE POINT

PLOT DATE: Aug 05, 2025 - 3:12pm



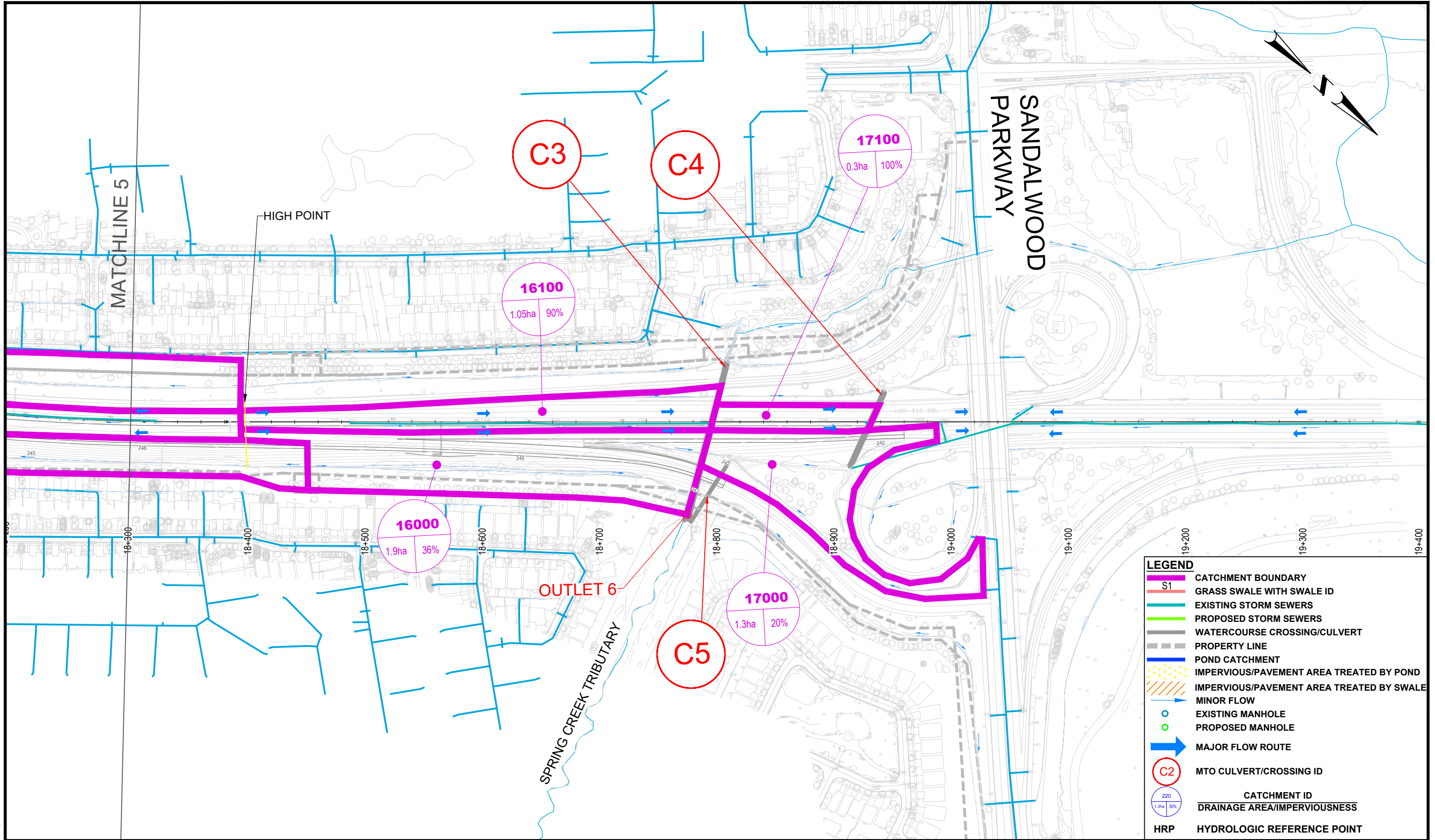
HIGHWAY 410 IMPROVEMENTS FROM SOUTH OF QUEEN STREET TO NORTH OF BOVAIRD DRIVE
PRELIMINARY DESIGN & CLASS EA STUDY

PROPOSED CONDITIONS
ROADWAY DRAINAGE & STORMWATER
MANAGEMENT CONCEPT PLAN



DATE: FEBRUARY 2025

FIGURE
5.6



PLOT DATE: Aug 05, 2025 - 3:14pm

AECOM

Ontario **Ministry of Transportation**

HIGHWAY 410 IMPROVEMENTS FROM SOUTH OF QUEEN STREET TO NORTH OF BOVAIRD DRIVE
PRELIMINARY DESIGN & CLASS EA STUDY

PROPOSED CONDITIONS
ROADWAY DRAINAGE & STORMWATER
MANAGEMENT CONCEPT PLAN

SCALE: 1:3000



DATE:

FEBRUARY 2025

FIGURE
5.7